

Indian River Plantation Marriott Resort I, a P.U.D.

A PARCEL OF LAND IN GOVERNMENT LOTS 3, 4 AND 8,
SECTION 31, TOWNSHIP 37 SOUTH, RANGE 42 EAST,
MARTIN COUNTY, FLORIDA

CLERK'S RECORDING CERTIFICATE

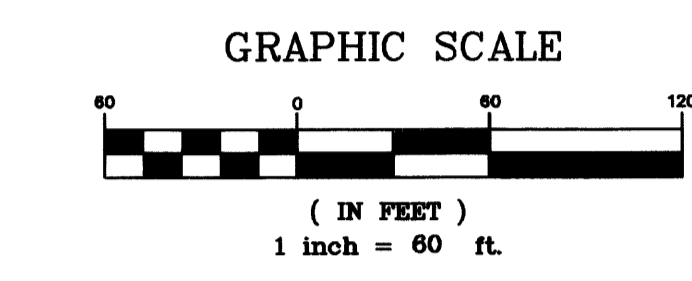
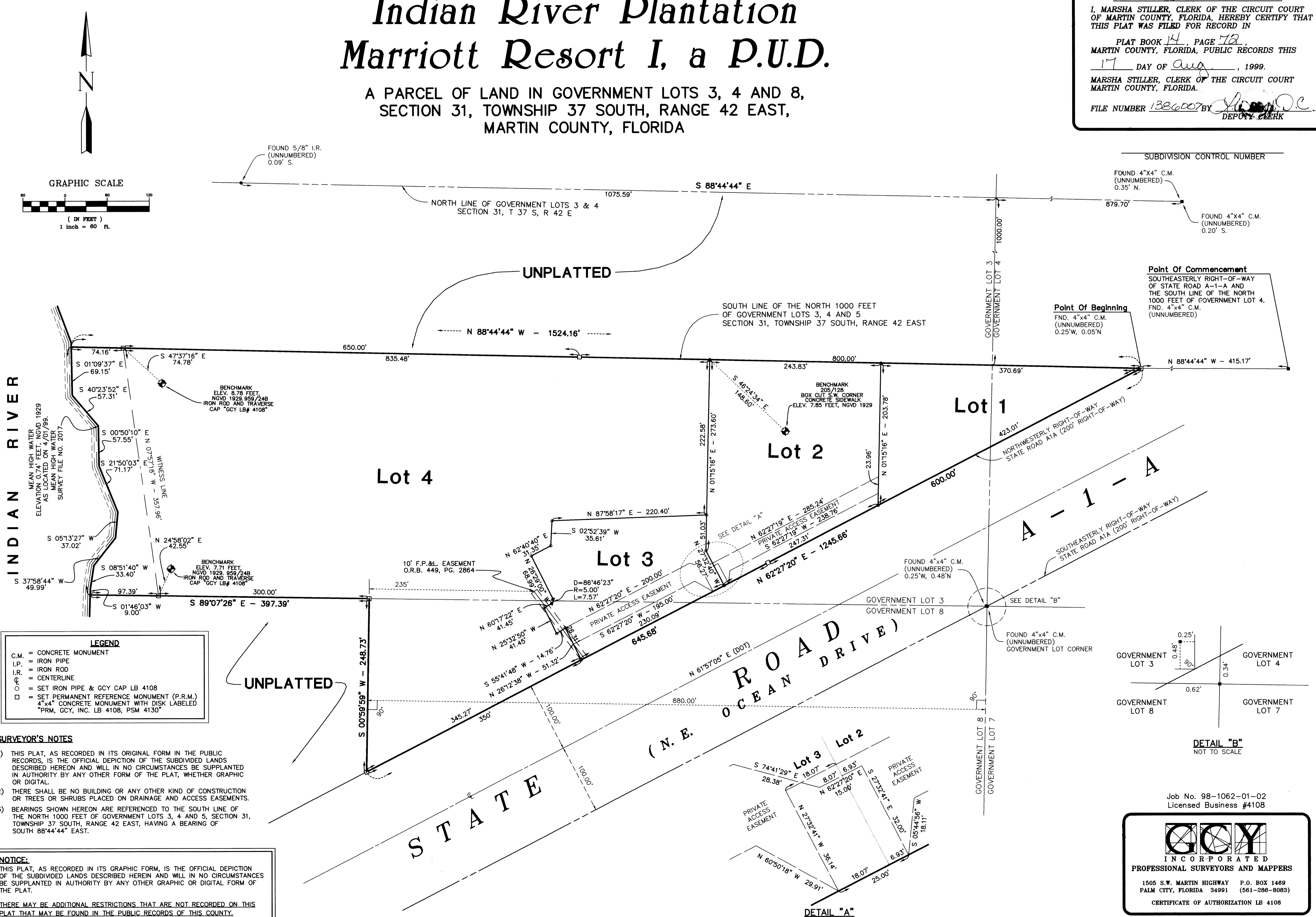
I, MARSHA STILLER, CLERK OF THE CIRCUIT COURT OF MARTIN COUNTY, FLORIDA, HEREBY CERTIFY THAT THIS PLAT WAS FILED FOR RECORD IN

PLAT BOOK 14, PAGE 72,
MARTIN COUNTY, FLORIDA, PUBLIC RECORDS THIS

17 DAY OF Aug, 1999.

MARSHA STILLER, CLERK OF THE CIRCUIT COURT
MARTIN COUNTY, FLORIDA.

FILE NUMBER 1386007 BY [Signature]
DEPUTY CLERK

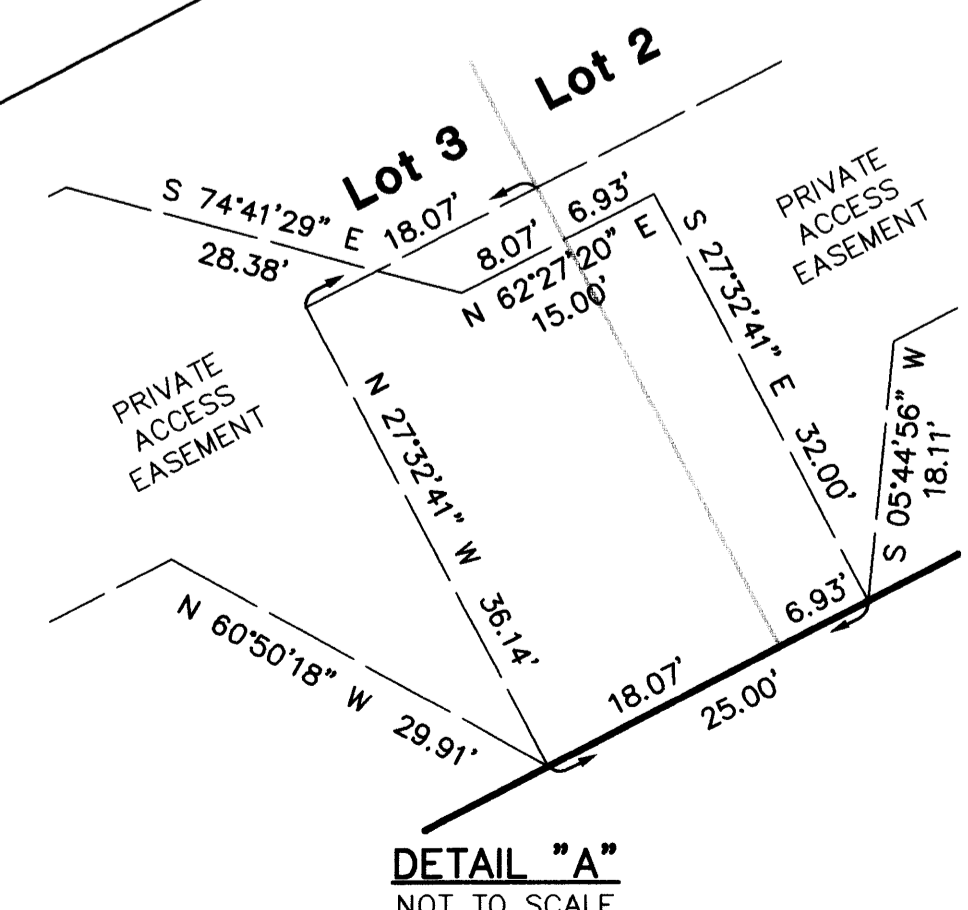
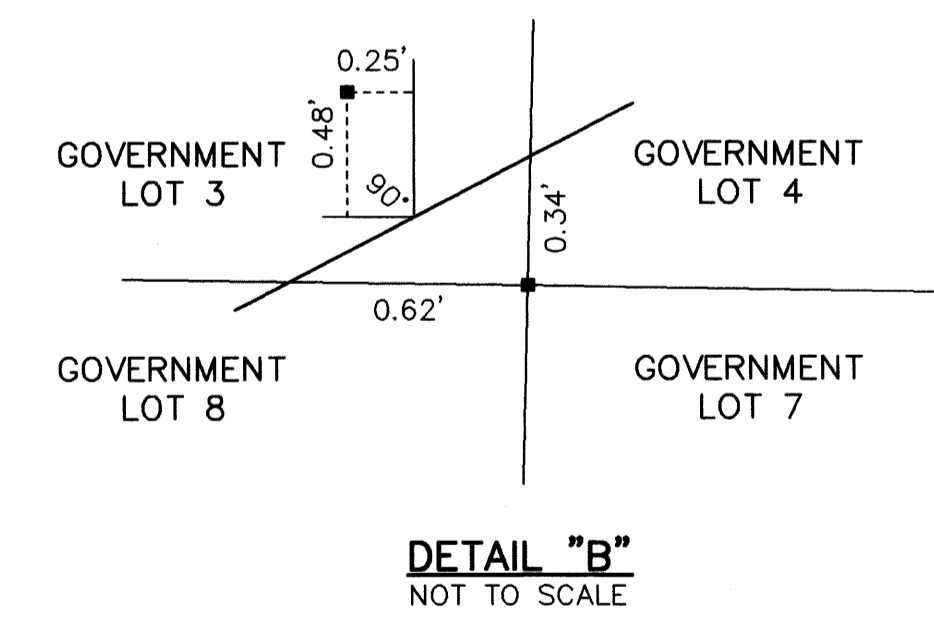


LEGEND

C.M.	= CONCRETE MONUMENT
I.P.	= IRON PIPE
I.R.	= IRON ROD
—	= CENTERLINE
○	= SET IRON PIPE & GCY CAP LB 4108
□	= SET PERMANENT REFERENCE MONUMENT (P.R.M.)
□	= SET PERMANENT REFERENCE MONUMENT WITH DISK LABELED "PRM, GCY, INC. LB 4108, PSM 4130"

- SURVEYOR'S NOTES**
- 1) THIS PLAT, AS RECORDED IN ITS ORIGINAL FORM IN THE PUBLIC RECORDS, IS THE OFFICIAL DEPICTION OF THE SUBDIVIDED LANDS DESCRIBED HEREON AND WILL IN NO CIRCUMSTANCES BE SUPPLANTED IN AUTHORITY BY ANY OTHER FORM OF THE PLAT, WHETHER GRAPHIC OR DIGITAL.
 - 2) THERE SHALL BE NO BUILDING OR ANY OTHER KIND OF CONSTRUCTION OR TREES OR SHRUBS PLACED ON DRAINAGE AND ACCESS EASEMENTS.
 - 3) BEARINGS SHOWN HEREON ARE REFERENCED TO THE SOUTH LINE OF THE NORTH 1000 FEET OF GOVERNMENT LOTS 3, 4 AND 5, SECTION 31, TOWNSHIP 37 SOUTH, RANGE 42 EAST, HAVING A BEARING OF SOUTH 88°44'44" EAST.

NOTICE:
THIS PLAT, AS RECORDED IN ITS GRAPHIC FORM, IS THE OFFICIAL DEPICTION OF THE SUBDIVIDED LANDS DESCRIBED HEREIN AND WILL IN NO CIRCUMSTANCES BE SUPPLANTED IN AUTHORITY BY ANY OTHER GRAPHIC OR DIGITAL FORM OF THE PLAT.
THERE MAY BE ADDITIONAL RESTRICTIONS THAT ARE NOT RECORDED ON THIS PLAT THAT MAY BE FOUND IN THE PUBLIC RECORDS OF THIS COUNTY.



Job No. 98-1062-01-02
Licensed Business #4108

GCY
INCORPORATED
PROFESSIONAL SURVEYORS AND MAPPERS

1505 S.W. MARTIN HIGHWAY P.O. BOX 1469
PALM CITY, FLORIDA 34991 (561-286-8083)

CERTIFICATE OF AUTHORIZATION LB 4108